

# Running Procedure for Bushmaster® SP Connection

Procedure No: FT-RP-010

Rev: 05



## Approvals

<b>Revised By</b>	Nilton Garcia (Fermata® Technologies) & Daniel Ruiz (OFSi)	04/16/25
<b>QA Approval</b>	Israel Martinez	04/23/25
<b>Approved By</b>	Nilton Garcia	04/23/25

## Revision Control

REV	Description of Changes	Date Issued
05	Section 4 Revised to include additional make-up criteria and examples.	4/23/2025

All material contained in this brochure is for general information only. This material should not, therefore, be used or relied upon for any specific application without an independent competent professional examination and verification of its accuracy, suitability, and applicability. Fermata® Technologies, LLC does not assume any responsibility or liability for any loss, damage, injury resulting from the use of information and data

# Running Procedure for Bushmaster® SP Connection

Procedure No: FT-RP-010

Rev: 05

## 1. General Running Procedure

1.1 Refer to General Running Procedure No. FT-RP-000 latest revision.

1.2 Fermata® strongly recommends the use of a Fermata® certified and trained thread rep service company during all Fermata® Connections casing runs. If a Fermata® certified/trained thread rep service is not used, the operator is responsible for approving and ensuring that all connection make-ups meet Fermata® make-up criteria.

## 2. Thread Compound Application

2.1 Fermata® recommends the use of Fermata® Constrictor® Advanced Thread Sealant for all sizes on the coupling / box connection.



Figure 1: Fermata® Constrictor® Advanced Thread Sealant

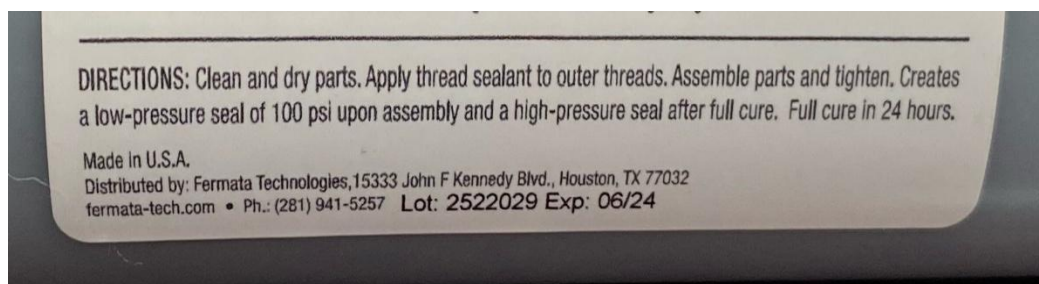


Figure 2: Example of Fermata® Constrictor® Advanced Thread Sealant Label Expiration Date

2.2 The amount of applied thread compound will depend on the size and weight configuration of the connection.

2.3 Using a measuring device, apply the amount of thread compound or sealant specified in Table 1 to the coupling box threads. Adjust thread compound or sealant amount by up to 2mL as needed to achieve comparable application to that in Figure 3. DO NOT apply thread compound or sealant on the pin connection. Under certain circumstances dope application may be altered only if approved by Fermata® engineering.

# Running Procedure for Bushmaster® SP Connection

Procedure No: FT-RP-010

Rev: 05

**Table 1: Constrictor® Advanced Thread Sealant Amount**

OD (inches)	Volume (mL)
3-1/2"	1.25
4-1/2"	3
5"	3.5
5-1/2"	5
7	5
7-5/8"	6.25
8-5/8"	6.25
9-5/8"	7.5

- 2.4 The use of a fine bristle mustache or 1" paint brush is recommended to best control the application of thread sealant. The brush should be clean and free of any water. Water that is on the brush or connection must be completely removed before the application of sealant. Apply a light coat of Fermata® Constrictor® Advanced Thread Sealant to the coupling box threads.
- 2.5 Under certain circumstances, the thread sealant brand and application process may be altered, only if approved by Fermata® Engineering.



**Figure 3: Example of Proper & Acceptable Thread Compound Application of the Box Connection**

- 2.6 Ensure not to overapply thread compound. When using a measuring spoon to measure the thread compound amount, level the spoon by scraping the top of the spoon with a flat edge if the volume increment is equivalent to the spoon (example: if 5mL is specified in the running procedure and a 5mL spoon is used for measuring, level the spoon). Use the applicator brush to clean out the spoon and spread the compound evenly across all threads. Do not apply any compound past the base of the make-up indicator.

# Running Procedure for Bushmaster® SP Connection

Procedure No: FT-RP-010

Rev: 05

2.7 Excessive thread compound can cause dope squeeze and/or yielding on a connection. If dope squeeze or yielding is observed, reduce the amount of thread compound. It is recommended to start with a reduction of 30%. Ensure that the connection maintains light and full coverage. The following figures (Figures 4 & 5) are 2 unacceptable graphs due to excessive compound.



Figure 4: Yielding



Figure 5: Dope Squeeze

## 3. Connection Compatibility

3.1 Bushmaster® SP pins have limited compatibility with differing weights with the same OD. Careful consideration of the performance properties of the weakest connection must be made by the operator. Confirm specific weight compatibility with a Fermata® representative prior to running.

## 4. Make-up

4.1 The Field Service Technician must ensure that he has the correct and latest data sheets.

4.2 The Field Service Technician will apply all thread compound per the manufacturers' recommendations prior to starting the casing run. If any joints are not able to have thread compound applied on the pipe rack due to the way the pipe is arranged, the Field Service Technician will apply the thread compound as they are brought to the rig floor or as the ends are accessible on the pipe rack during the run.

4.3 The Field Service Technician must remain on the tower or rig floor to accept all make-up graphs and notify the rig crew that he will be on the ground applying thread compound on the pipe rack.

4.4 During the running of the casing, the Field Service Technician is responsible for approving all make-up graphs and verifying the placement of the Constrictor® lock point. If the movement of cables, slips, or binding of elevators is observed, all efforts must be made to fix the issue and shall be noted in the comments of the make-up graph and the field service report.

# Running Procedure for Bushmaster® SP Connection

Procedure No: FT-RP-010

Rev: 05

- 4.5 Fermata® recommends setting the scale (X axis) of the make-up graph to 5-8 turns to obtain a proper make-up profile.
- 4.6 An encoder should be used and not a proximity switch for counting rotations. Generally, proximity switches do not provide adequate pulses per revolution.
- 4.7 Fermata® recommends targeting the optimum make-up torque listed on the current connection data sheet. Any make-up torque between the minimum and maximum make-up torque is acceptable, but the optimum make-up torque is ideal for most conditions and common equipment. Add 10% to all specified make-up torque values when using a thread locking compound.
- 4.8 Before the first connection make-up, set the dump valve to the optimum torque and test on the pipe body to ensure proper tong engagement and that the pipe integrity is not compromised.
- 4.9 Make-up the first connection to the optimum torque, draw a line across the pin and box, and re-apply the optimum torque (double bump).
- 4.10 If movement past 0.5" is observed, reapply optimum torque +20% (This may exceed maximum make-up torque, but is acceptable, provided no yielding is observed and the tongs are not compromising the pipe body).
- 4.11 Repeat 4.9 to 4.10.
- 4.12 Movement is an indication of excess thread compound. If observed, review the amount of thread compound applied and reduce the amount.
- 4.13 Continue making up the string to the higher torque value, if necessary.
- 4.14 Spin in the connection in high gear at Revolutions Per Minute (RPM) at or below that listed in Table 2.
- 4.15 Move to low gear prior to the Constrictor® lock point (see Figure 6) and keep the RPM at or below that listed in Table 2.
- 4.16 RPM may occasionally be adjusted based on makeup profile if approved by Fermata® Field Service Management or Engineering.
- 4.17 The following (Table 2) is the recommended maximum make-up RPM.

**Table 2**

<b>Pipe Diameter</b>	<b>High Gear not to exceed</b>	<b>Low Gear not to exceed</b>
4-1/2" to 5-1/2"	20 RPMs	5 RPMs
7" to 7-5/8"	15 RPMs	5 RPMs
9-5/8" and greater	10 RPMs	3 RPMs

- 4.18 Verify the make-up result against the torque-turn graph to ensure that there were no abnormal make-up scenarios that could affect the make-up and performance of the connection.
- 4.19 The Constrictor® Lock Point is the point on the graph where the torque-turn slope begins to change from curved to linear. It is required to be between 5% and 80% of makeup torque. See Figure 6.



# Running Procedure for Bushmaster® SP Connection

Procedure No: FT-RP-010

Rev: 05

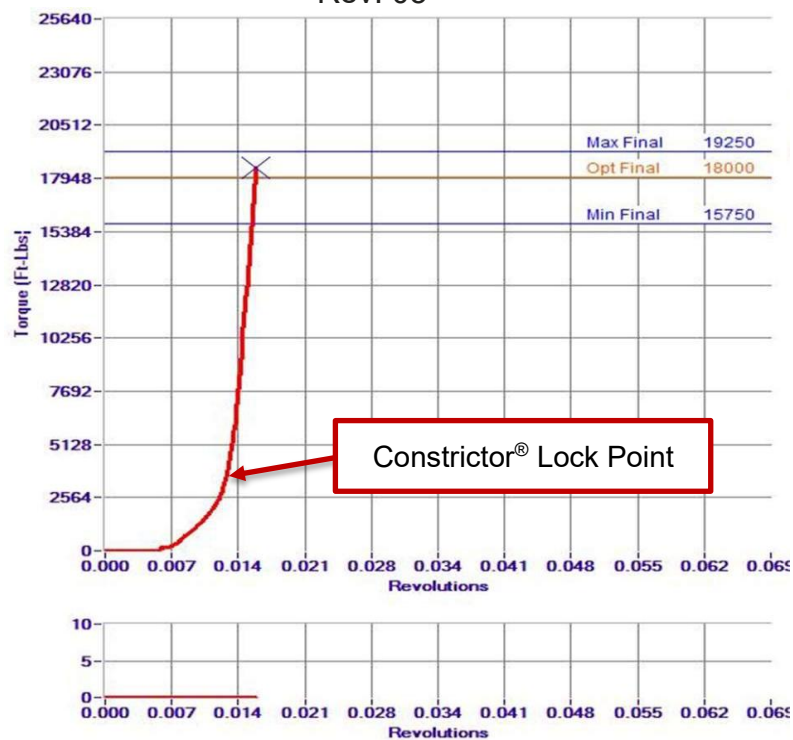


Figure 6: Example of a Proper Make-up Graph

4.20 Figures 7 and 8 are examples of unacceptable make-up graphs where too much thread compound was applied.

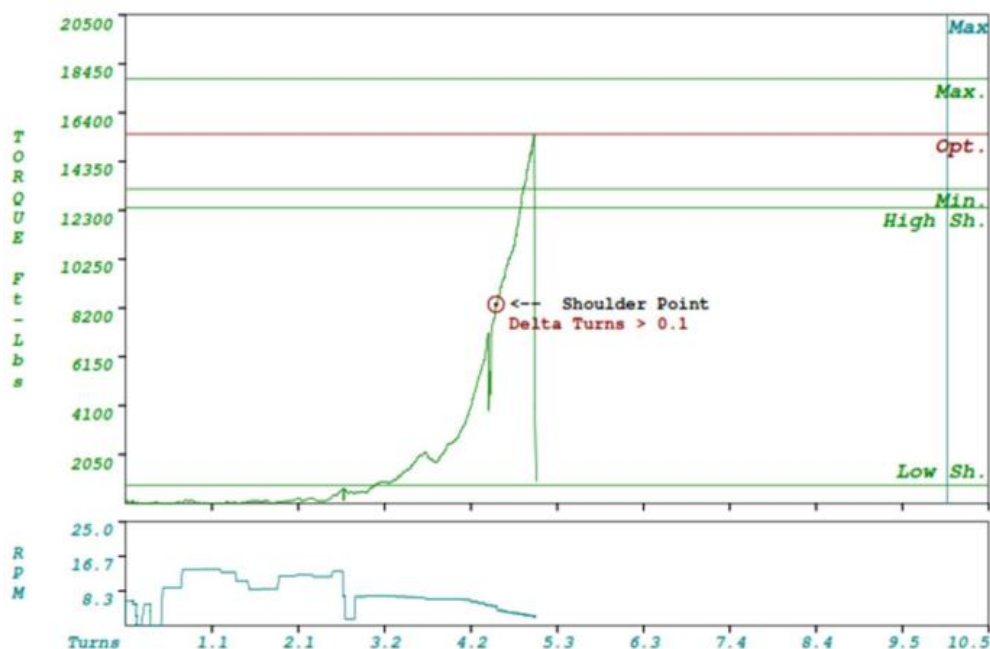


Figure 7: Unacceptable Make-Up Graph Example

# Running Procedure for Bushmaster® SP Connection

Procedure No: FT-RP-010

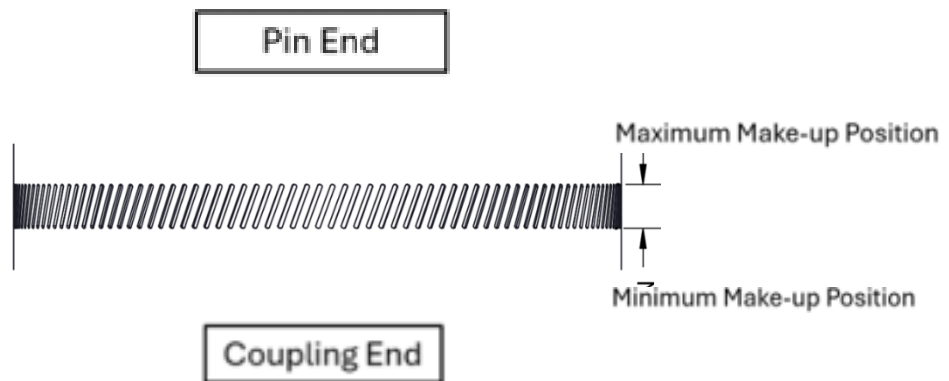
Rev: 05



**Figure 8: Unacceptable Make-Up Graph Example**

4.21 Verification of proper Bushmaster® SP connection make-up can be made by checking that the box face falls within the knurl marking on the pin/pipe body, or that the base of the triangle is aligned within  $\pm .062$ " of the box face.

4.22 Knurl band acceptable coverage is 50% - 100% of pipe circumference.



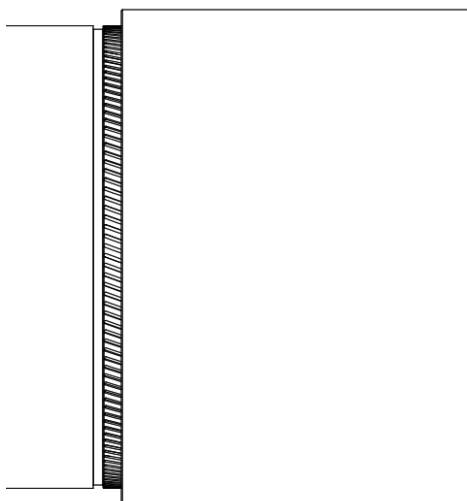
4.23

**Figure 9: Knurl Band Tolerance Criteria**

# Running Procedure for Bushmaster® SP Connection

Procedure No: FT-RP-010

Rev: 05

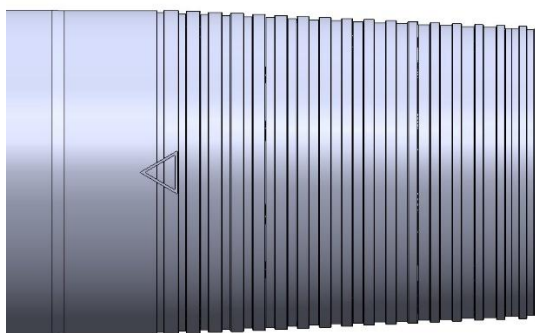


**Figure 10: Knurling Area After Box/Pin Make-Up**

4.24 For connections with a triangle stamp, a 1" wide X 4" long white paint stripe is applied to the mill and 1" wide X 24" long field end to aid in locating the triangle stamp.



**Figure 11: Example of Proper Triangle Stamp Position After Make-Up**



**Figure 12: Triangle Stamp Applied to Pin**



**Figure 13: Triangle Stamp Location After Make-Up**



# Running Procedure for Bushmaster® SP Connection

Procedure No: FT-RP-010

Rev: 05

## 5. Downhole Rotation

- 5.1 The maximum operating torque listed on the current connection data sheet is the maximum torque for downhole rotation unless reviewed and approved by engineering. Speed should not exceed 40 RPM.
- 5.2 RPM's and operating torque may be evaluated and adjusted on a case-by-case basis, if approved by Fermata® Engineering.
- 5.3 Take care to gradually increase or decrease rotation speed and torque to prevent potential dynamic loading scenarios.

## 6. Break out & Inspection of Connection

- 6.1 Verify the back-up tongs are equipped with the appropriately sized dies prior to breaking out the connection.
- 6.2 Place the back-up tongs on the pipe body below the threaded area of the box.
- 6.3 Break-out the connection in low gear to ensure adequate torque capability.
- 6.4 Keep break-out speed low to prevent galling (preferably 5 RPM or less)
- 6.5 Break-out the connection slowly until the pin “jumps”, indicating disengagement.
- 6.6 Use a stabbing guide prior to disengagement to prevent damage to the connection.
- 6.7 Alignment is equally important during the connection break-out as during make-up. Verify alignment prior to break-out of the connection.
- 6.8 If it is necessary to re-run the connection, make sure to fully break-out the connection, remove all thread compound and debris, inspect the connection for damage (galling/gouging), and follow the make-up procedure outlined in Section 4.
- 6.9 When necessary to lay down the string, the connection must be stored and covered with an approved storage compound and covered with the proper sized thread protectors. Ensure that the thread protectors are clean and free of grime, debris and foreign contaminants.
- 6.10 All used, rejected, and/or repairable pipe left at the rig location must be identified, tagged and categorized based on the chart shown in Figure 14, and must be submitted to Field Service Management as soon as possible via email.

Summary of Pipe left on Rig Location		
Customer: _____ Rig: _____ Well Name: _____		
String 1	String 2	
		<b>Prime Joints</b> , conduct VTI leave instructions to apply storage compound prior to having thread protectors placed back on. (Joints that never left the pipe rack)
String 1	String 2	
		<b>Rig Returns</b> , identified by <b>1 White band</b> near mill end & <b>1 Yellow band</b> at repairable end / area. (Joints that were made up never went below the rig floor, broken out, laid down, and passed VTI.)
String 1	String 2	
		<b>Used Pipe</b> , identified by a <b>1 Orange band</b> 6 inches each side of the defect, damage, or made up end and near the mill end. (Joints failed VTI or went below rig floor.)
String 1	String 2	
		<b>Rejected Pipe</b> , identified by a <b>1 Red band</b> 6 inches each side of the defect, damage, or made up end and near the mill end. (Joints rejected with signs of galling, pitting, or other damage.)

Figure 14: Pipe Classification Summary